

**Materials You Will Need:**

Grand Calibur  
Die Cutting  
Machine

Spellbinder  
Enchanted Labels  
28 Die & Labels 28  
Die

Sam Poole Umount  
Wise Friend A5  
Stamp Plate

Cosmic Shimmer  
Clear PVA Glue

Cosmic Shimmer  
Clear Texture  
Paste & Clear  
Micro Beads

Milk or Ivory A4  
Card

Cosmic Shimmer  
Copper Rose  
Sparkle Mica  
Powder

Tim Holtz Glassine  
Paper & Grime  
Boss

Tulips Mask – That  
Special Touch

Blending Mat

Tim Holtz Idea-  
ology Kraft Resist  
Paper Stash &  
Victorian Velvet  
Distress Ink Pad

Perfect Medium  
Ink Pad or  
Embossing Ink Pad

Rose Wrinkled  
Edge Ribbon

Adirondack Gold  
Dabber &  
Distress Crackle  
Rock Candy

Vernon Court  
Henson Way  
Telford Way Ind.  
Estate  
Kettering  
Northants  
NN16 8PX

www.creative-  
expressions.uk.com



This workshop shows how to create a different look using the Cosmic Shimmer clear texture paste, a mask, mica to tint the paste & some micro beads.

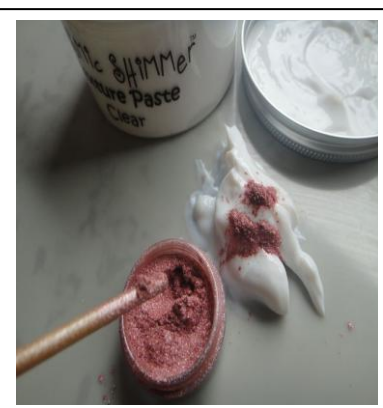
Here is a close up of the tinted texture paste with micro beads added. Use another mica colour with lighter card for different look altogether.



For the project you'll need a mask and in this case the tulip 'that special touch' mask has been picked. Also gather the Cosmic Shimmer clear texture paste, the clear micro beads & some mica powder plus the dies.

Cut & emboss the largest enchanted labels 28 die in Ivory or milk A4 card & the coordinating labels 28 die in the glassine paper.

Use some low tack tape to stick the glassine piece to the ink blending mat (or a non stick craft mat can be used)



Place the tulip mask over the glassine shape making sure the flowers are placed exactly where they are wanted to show on the glassine paper. Lift the low tack tape & now place on the mask.

Add a small amount of the Cosmic Shimmer clear texture paste onto the corner of the blending mat.

Scoop a small amount of the chosen mica powder & place onto the texture paste.

# HOW TO... *'Let Your Spirit Fly' Card*

*Make the*

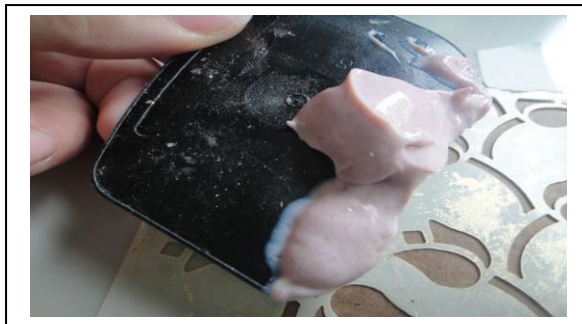
*'Let Your Spirit Fly' Card*



Start to mix by folding the mica into the texture paste.



Continue until all the mica is evenly mixed and you are left with a smooth paste.



Scoop the coloured paste up onto a flat surface tool.



Now place the paste onto the mask & drag the paste over the mask. Remove any excess paste once it's all smooth over the mask.



Lift the mask off the glassine paper being careful not to disturb the just worked texture paste.



This is how the design will look with the coloured texture paste; alternatively use an already coloured paste.



Use a grime boss sheet to remove any excess paste left on the mask and on the blending mat. As there is some left over paste then it's worth using it up on a 2<sup>nd</sup> or 3<sup>rd</sup> panel & use another time.



Lay the panel on a piece of card as the glassine paper is likely to curve with the weight of the texture paste. Open the micro beads & have a lid ready underneath.



Tip the micro beads over the texture paste. Make sure there is a good covering & lightly sprinkle them over the paste so it's not distorted in any way.



Tip the panel up to remove any excess beads. Gently press the beads into the paste for a good all round cover. Set aside to dry.



Take the enchanted labels die shape & add some perfect medium just around the edges of the shape.



Take the same colour mica that was used to colour the texture paste & add it over the perfect medium using a paint brush.



Select the bird in flight piece of paper from the kraft resist stash pad & cut it to 7.5 inch square.



As the texture paste dries so will the look of the finished piece. It gives a soft texture to the glassine paper.



Dab some of the gold paint to create a distressed edging to the bird panel.



Add some dried clear Cosmic Shimmer glue to the long edge of some glassine paper. Then stick it to a 2<sup>nd</sup> piece of paper.



Cut the glassine paper to 8 inch square. Now add some distress crackle rock candy around the 4 edges of the paper. Either allow the rock candy to dry or use a heat tool to speed up the process. Heating the candy can cause it to bubble but if done slowly it will prevent this.

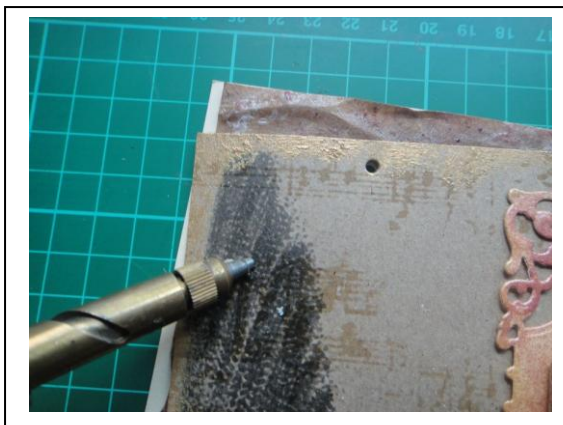


Crunch the edges up for a more distressed look & add some Victorian velvet ink to the edges



Mat the glassine paper onto a milk base card or a single layer of card before adding the bird panel at an angle. Mount the enchanted shape using foam tape for added dimension.

Now place the micro bead textured paste panel to the die shape again using foam tape. Add a small amount of cosmic shimmer glue to the foam tape to make sure it will adhere to the glassine paper.



Add 2 holes to the corner of the card & add some of the wrinkled ribbon through the holes & tie off in a bow.



Stamp the 'Let your Spirit Fly' sentiment onto the reverse side of kraft paper using some archival ink & then add some clear embossing powder over the top. Heat set the powder.



Tear around the sentiment & tint the edges with some of the Victorian velvet ink. Make a 2<sup>nd</sup> panel using the spirit writing & again distress the torn edges. Add the sentiment overlapping the worked panel using either Cosmic Shimmer glue and or foam pads as well.



Place a UTEE flower (or another embellishment) in the corner of the piece to complete the project. Try using mica flakes or different products into the paste for interesting effects ~ most of all just have fun playing.